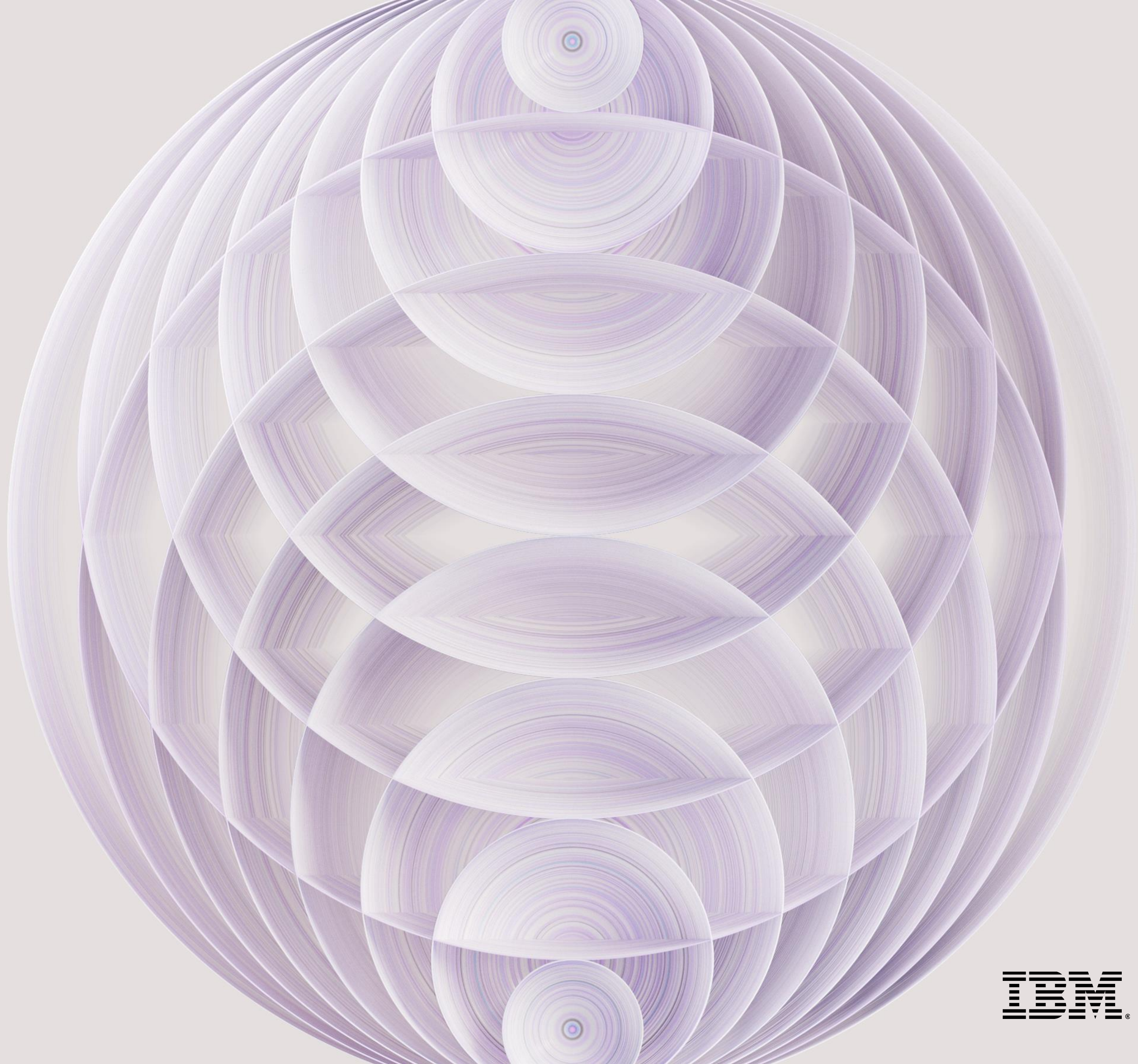


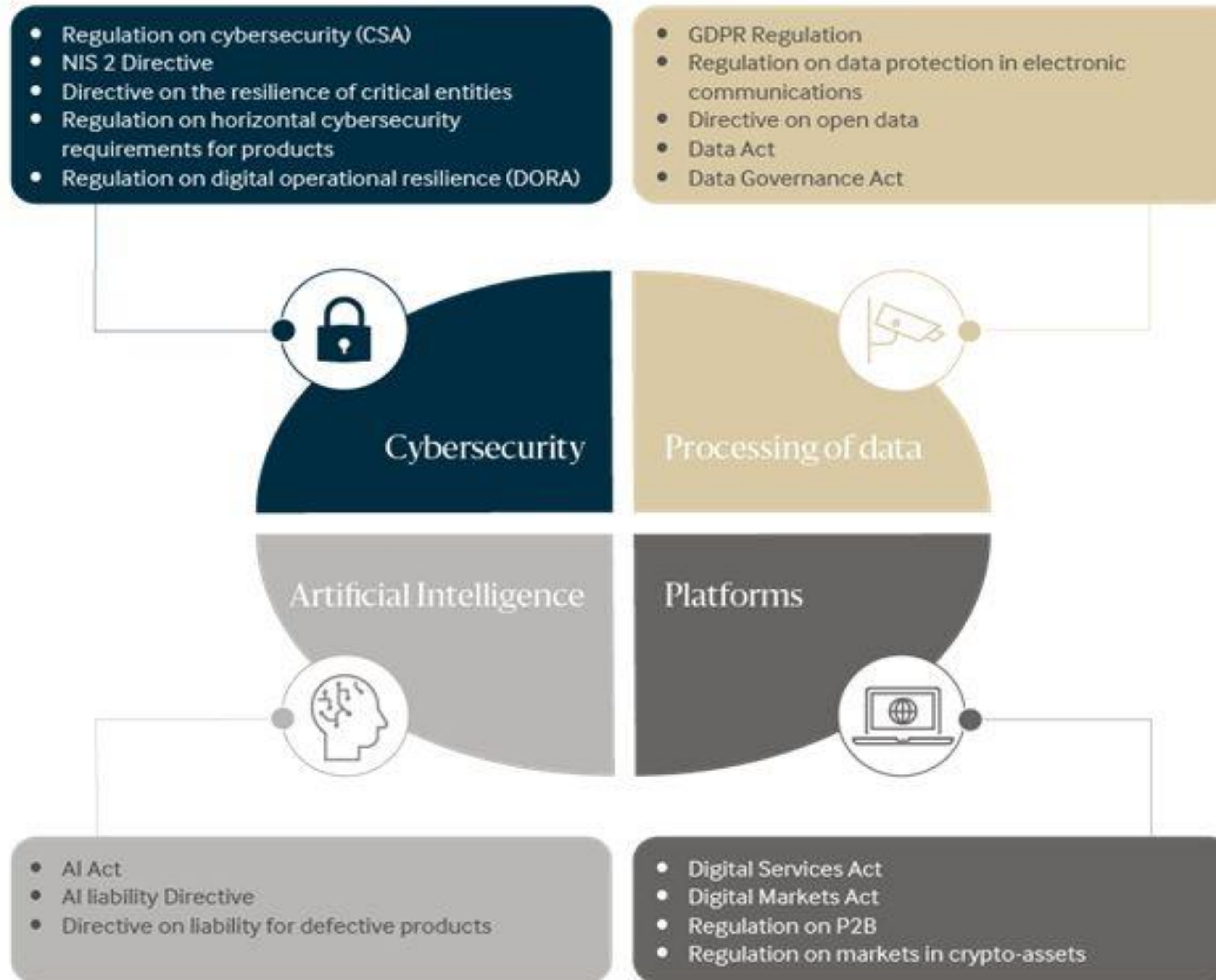
Ki lehet-e fehériteni az AI fekete dobozát?

Husztí Dániel
daniel.husztí1@ibm.com

watsonx



Adatstratégia és szabályozások az Európai Unióban



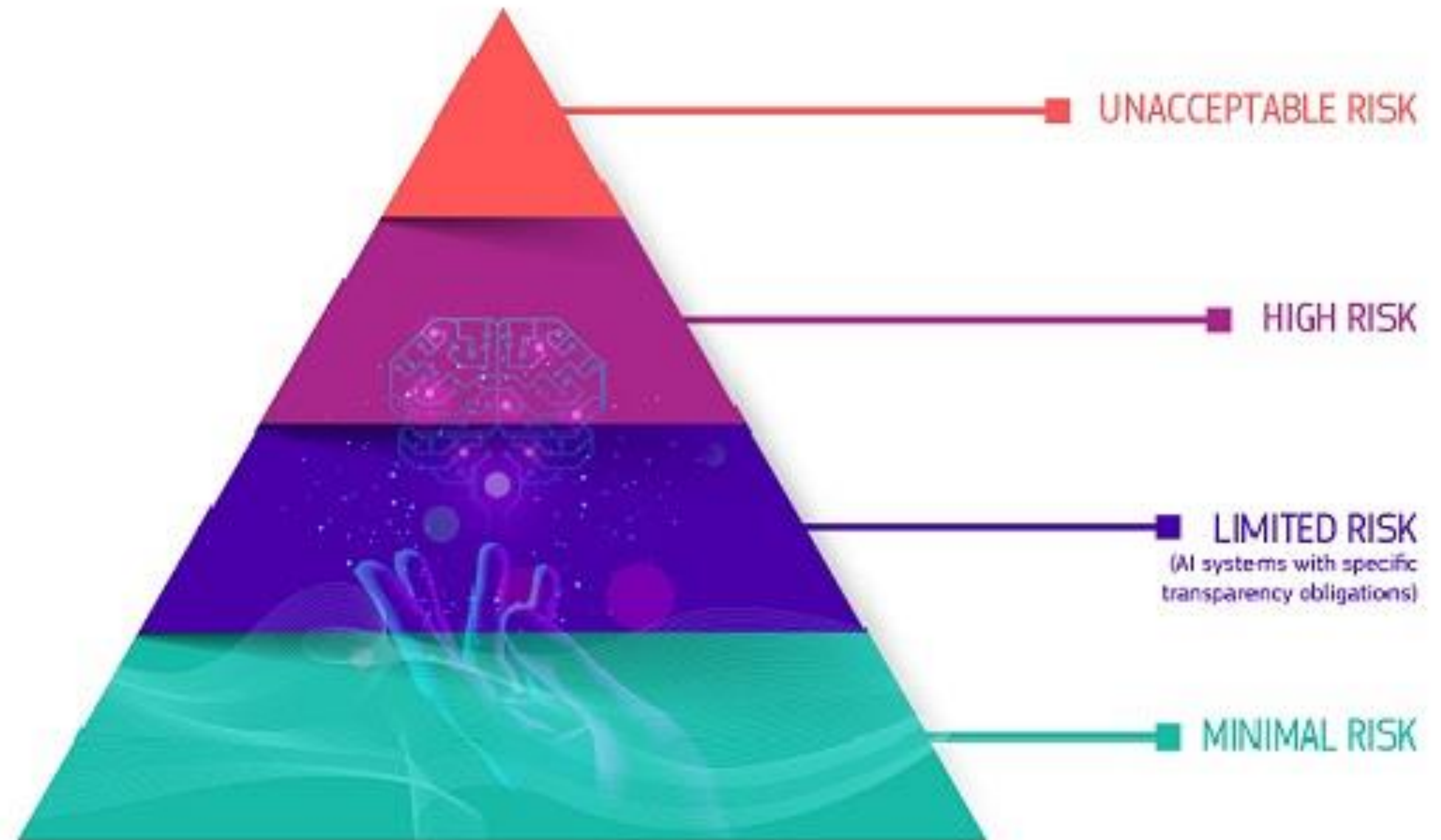
EU AI szabályozás

A jogszabály főbb elemei:

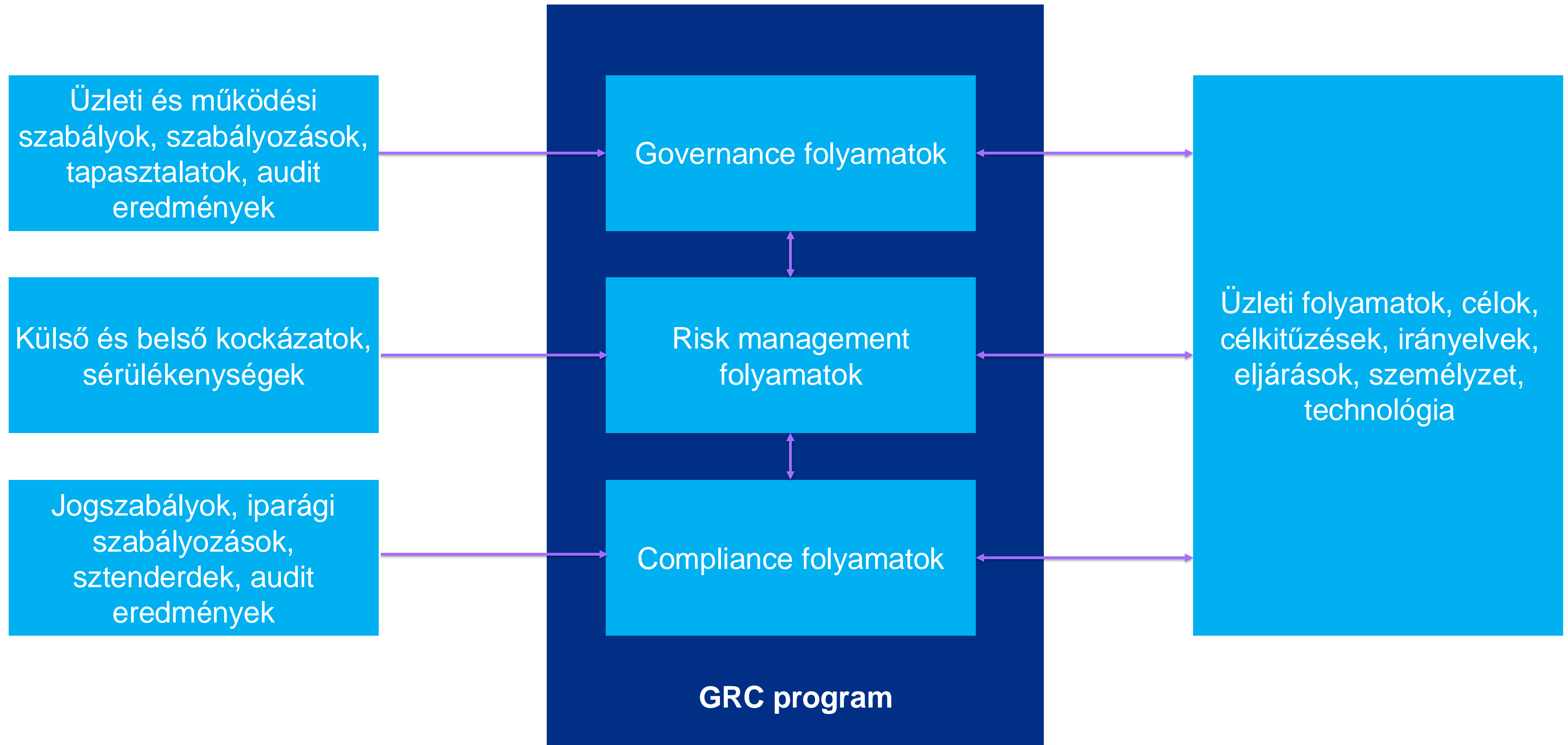
- Átláthatóság
- Emberi ellenőrzés
- Alapvető jogok védelme

Kockázati szintek:

- Nem elfogadható
- Magas
- Korlátozott
- Minimális



Integrált kockázatkezelés (GRC)



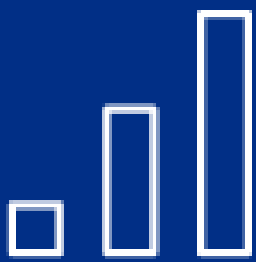
Kihívások az integrált kockázatkezelésben (GRC)



Törvényi szabályozások és hatásuk kezelése



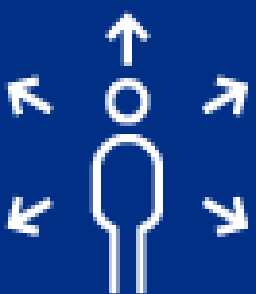
Vállalatot érintő kockázatok konzisztens nézete



GRC adatminőségi kihívások és adatsilók kezelése

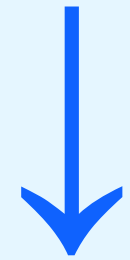


Felelősségi körök kialakítása a kockázatkezelési és szabályozási megfelelés során



Váratlan, kockázatos események bekövetkeztének csökkentése

Mesterséges Intelligencia felügyet

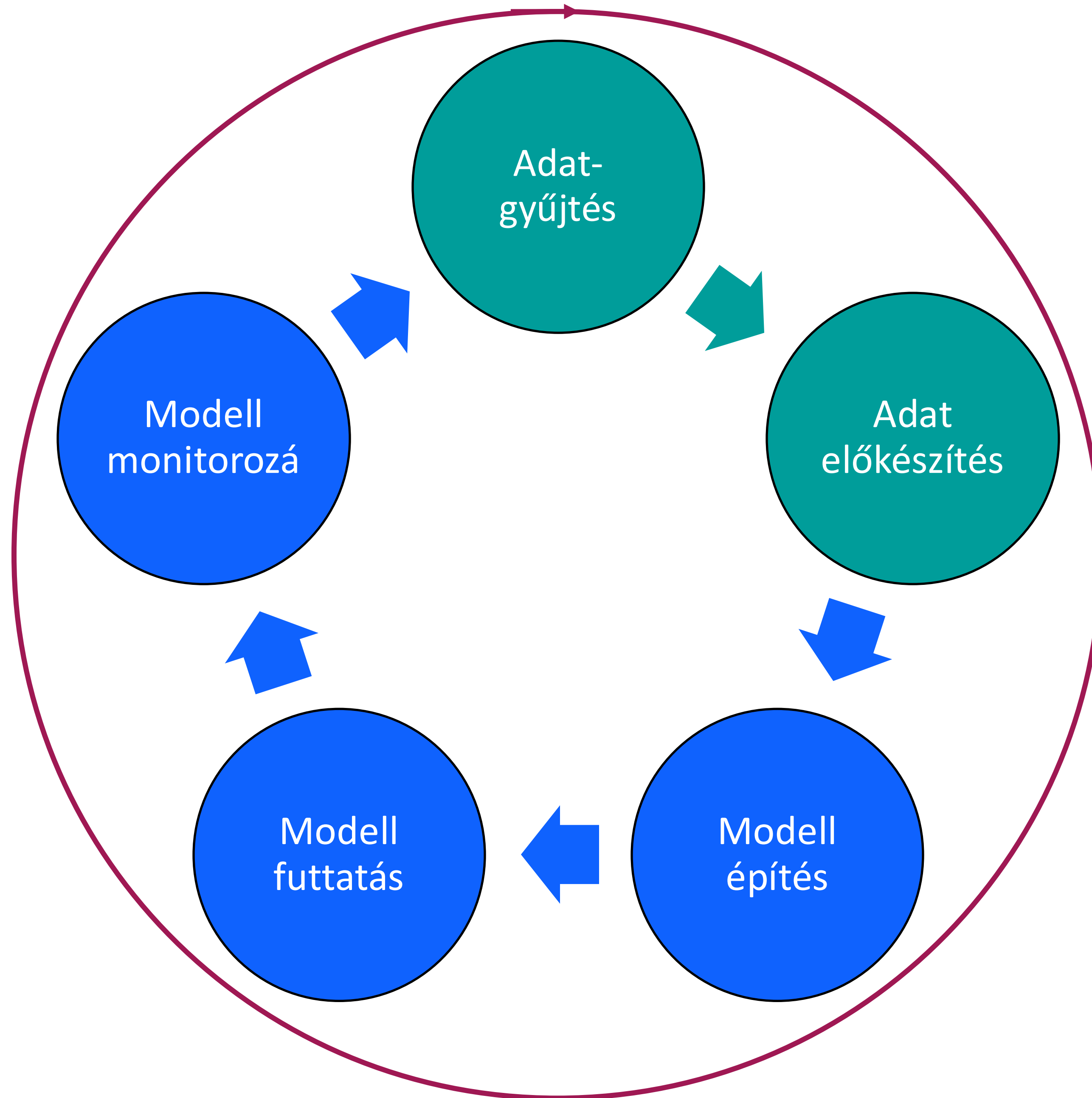


Egy szervezet mesterséges intelligencia tevékenységének irányítása, nyomon követése.

Teljeskörű MI életciklus kezelés az IBM watsonx segítségével



Megbízható MI



- **Adat:** Teljeskörű felügyet az adatok felett
- **Modell:** MLOps folyamat az elmagyarázhatóság és robosztusság érdekében
- **Folyamat:** Automatizálás a konzisztencia, a hatékonyság és az átláthatóság növelése érdekében



Welcome watsonx



Logout

News Article Analysis

AI-driven news article system leveraging foundational models

Why this application? ▼

Pick the News Article

BRIEF-Bigger Capital Fund Reports An 8 Pct Passive Stake In Akers Biosciences00

Global Markets: Asia shares reach decade top on China data, dollar in doldrums00

Donald Trump is the only person in Washington who doesn't seem worried about a shutdown00

Actor Casey Affleck withdraws as 2018 Oscar presenter: academy00

EU mulls new link between budget and civic rights00

BRIEF-Sandridge Energy Rejects Icahn's Proposal To Replace Two Of Five Directors00

News Article

January 15, 2018 / 12:41 AM / Updated an hour ago Oil hovers near three-year high despite rising U.S. output Nia Williams , Rod Nickel 3 Min Read

CALGARY, Alberta (Reuters) - Oil hovered near a three-year high above \$70 a barrel on Monday on signs that production cuts by OPEC and Russia are tightening supplies, although analysts warned of a "red flag" due to surging U.S. production. FILE PHOTO: A driver reads a newspaper as he sits on a spare tire attached to a parked oil tanker at a truck terminal in Mumbai, India, January 10, 2018. REUTERS/Shailesh Andrade/File Photo

International benchmark Brent crude futures LCOc1 last traded 29 cents higher at \$70.16 by 1937 GMT, having risen to a high of \$70.37 a barrel earlier in the session. U.S. West Texas Intermediate (WTI) crude futures CLc1 gained 51 cents at \$64.81 a barrel. Both benchmarks hit levels not seen since December 2014, although trading was thin due to a holiday in the United States.

A production-cutting pact between the Organization of the Petroleum Exporting Countries, Russia and other producers has given a strong tailwind to oil prices. Growing signs of a tightening market after a three-year rout have bolstered confidence among traders and analysts.

"It's catching a lot of people by surprise and I think (prices) are sustainable," said Phil Flynn, an analyst at Price Futures Group. "We're seeing the reality of strong demand and declining supplies."

Bank of America Merrill Lynch on Monday raised its 2018 Brent price forecast to \$64 a barrel from \$56, forecasting a deficit of 430,000 barrels per day (bpd) in oil production compared to demand this year.

Summary

Sentiment

Entities

prompt! ▼

v5: entity extraction with llama v2

New prompt + Save work

Prompt - View only

Structured Freeform

Model: llama-2-70b-chat

Try ^

Test your prompt

Input:	Output:
<pre><s>[INST] <<SYS>> Extract entities from the news articles given below. Follow the below mentioned examples to display all the different entities such as company, people and financial institutions. Do not give incomplete answers. Show all the values in each entity. It is acceptable to have multiple values in each entity. If you do not find any entity such as company, people and financial institutions, please fill it as "N/A". Act as a helpful, respectful and honest news article entity extraction tool. Please follow the following instructions: Do not omit any financial and numeric information such as year, revenue, index, company. You should not repeat your answers. You should not use any other knowledge. You should keep your answers short and concise. You should not include any harmful, unethical, racist, sexist, toxic, dangerous, or illegal content in your answers. You should ensure that your answers are socially unbiased and positive in nature. You should only answer the first unanswered question. If you don't know the answer to a question, please don't share false information, and say "I'm sorry, I was not able to find an answer to your question." Please use below examples as a reference to answer the questions. News Article: NEW YORK (Reuters) - European stocks closed lower on Tuesday, the first trading day of 2018, while Wall Street advanced and the U.S. dollar fell to its weakest in over three months against key currencies. Increases in Apple (AAPL.O), Facebook (FB.O), Alphabet (GOOGL.O) and Microsoft (MSFT.O) shares pulled the S&P 500 index higher on Tuesday. "People are back to looking at what have been the winners. It has been very momentum driven," said Rick Meckler, president of hedge fund LibertyView Capital Management LLC in Jersey City, New Jersey....</pre>	<pre>* Reuters * Esense-Lab Ltd * Academy of Motion Picture Arts and Sciences * Manchester by the Sea * Golden Globe * Batman v Superman: Dawn of Justice * Gone Baby Gone * I'm Still Here Financial Institutions: * N/A People: * Casey Affleck * Ben Affleck * Hillary Clinton * Louis Farrakhan * Barack Obama * Dan Whitcomb * Mara Buxbaum * Denzel Washington * Ryan Gosling * Joaquin Phoenix * Summer Phoenix</pre>

Model parameters

Decoding

Greedy Sampling

Repetition penalty

1 2

Stopping criteria

Stop sequences

+

Min tokens

Max tokens

Enter up to 6 sequences to stop output after the minimum number of tokens is reached.

Reset to default

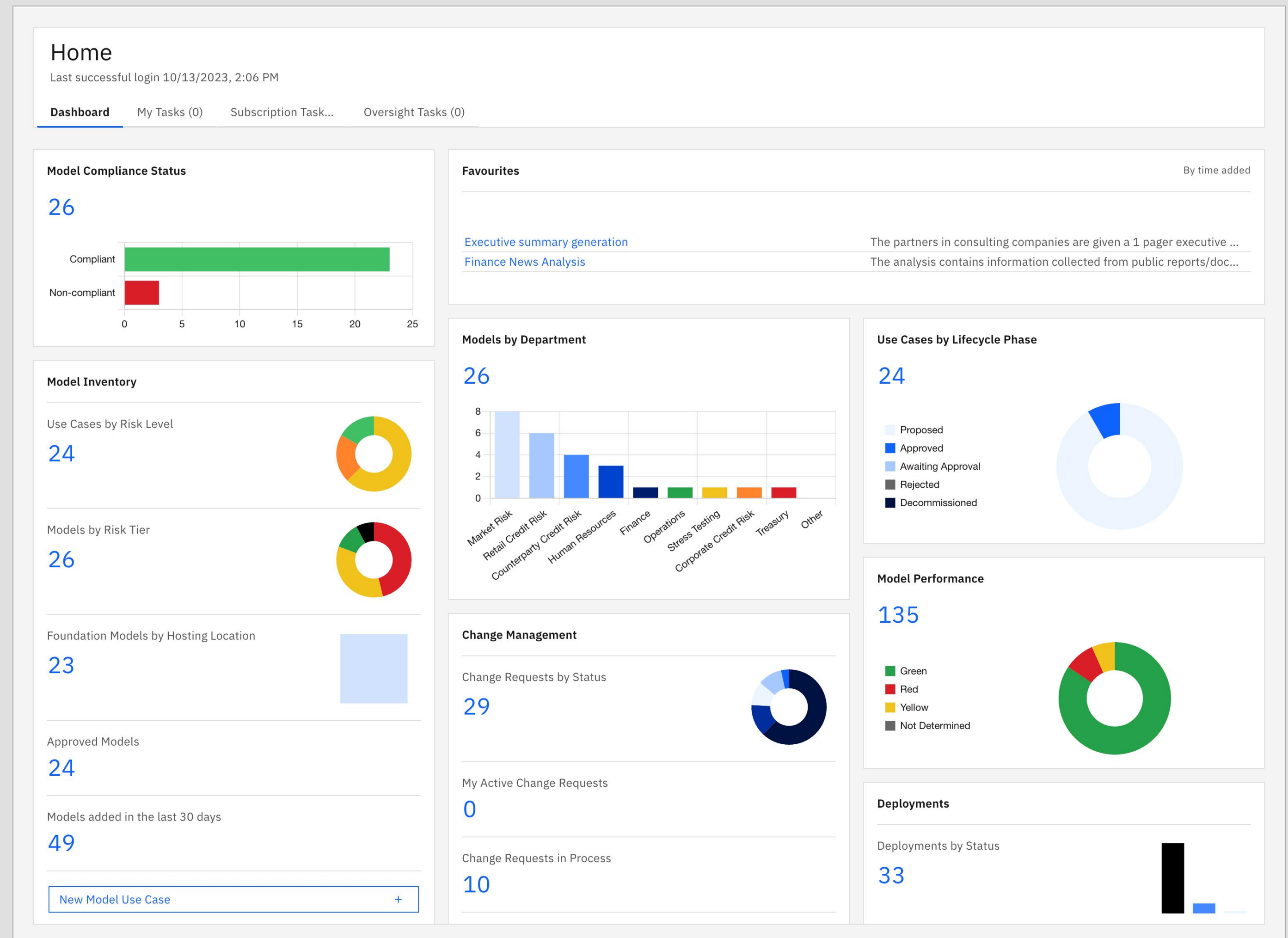
New test +

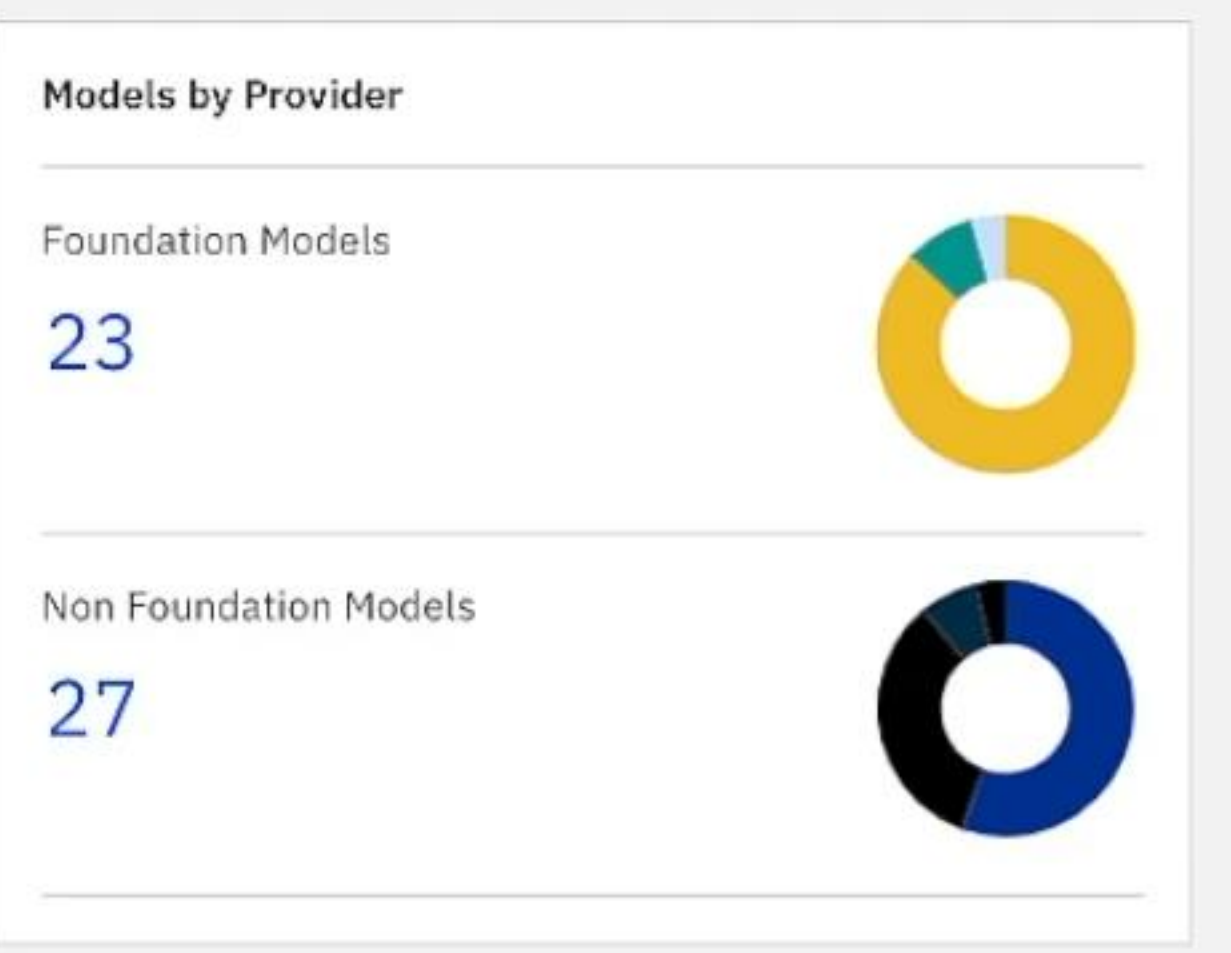
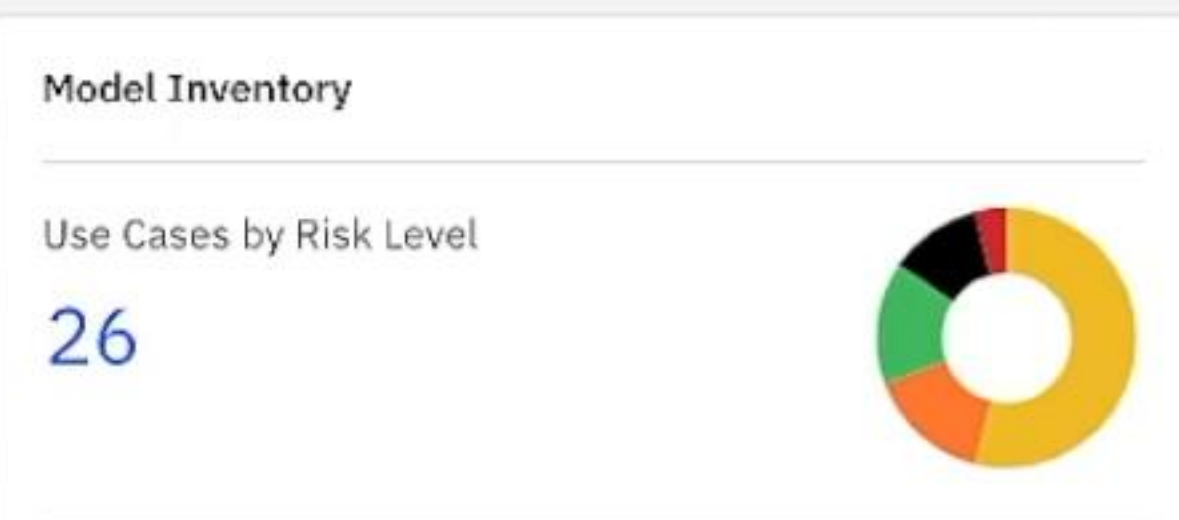
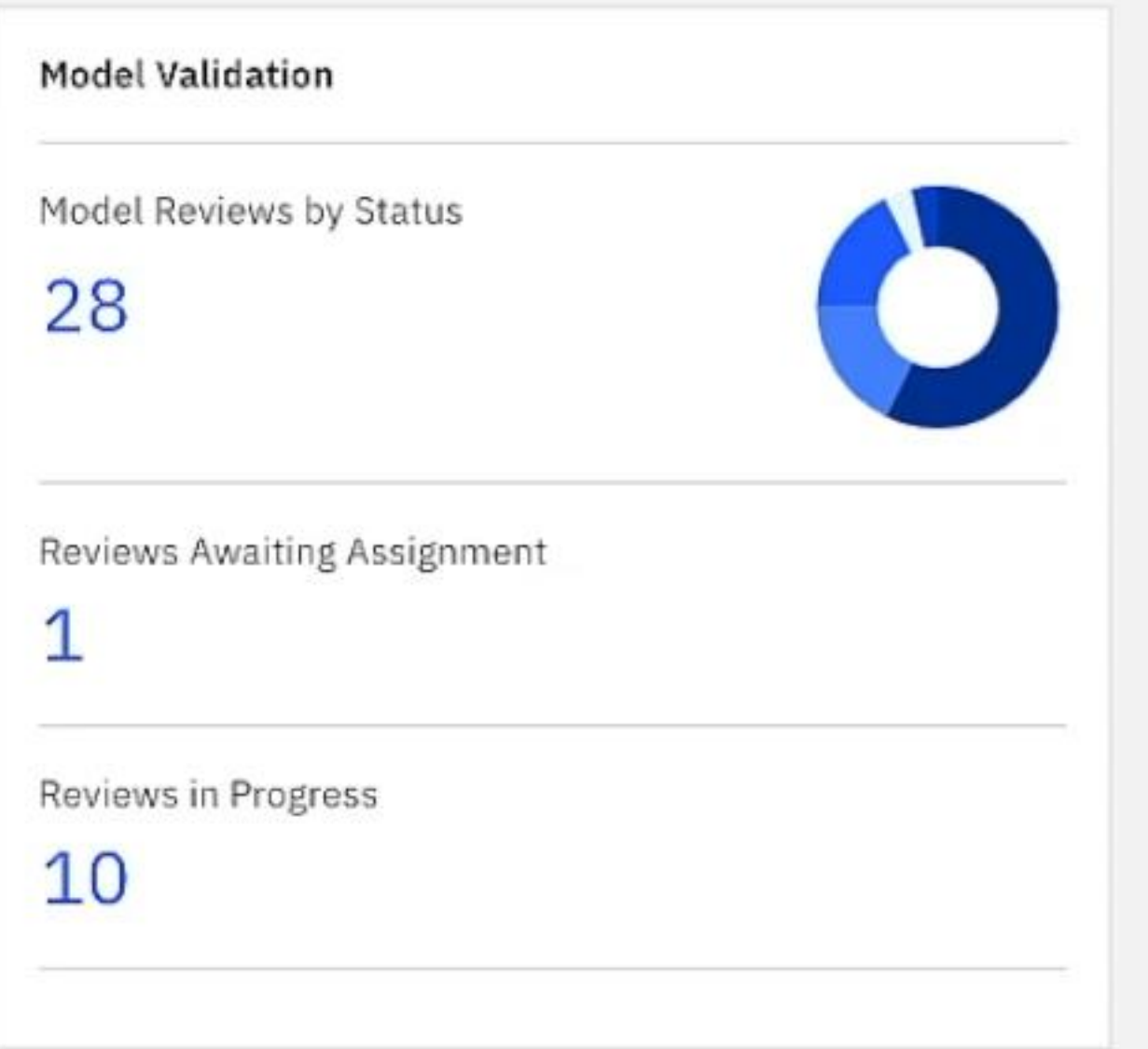
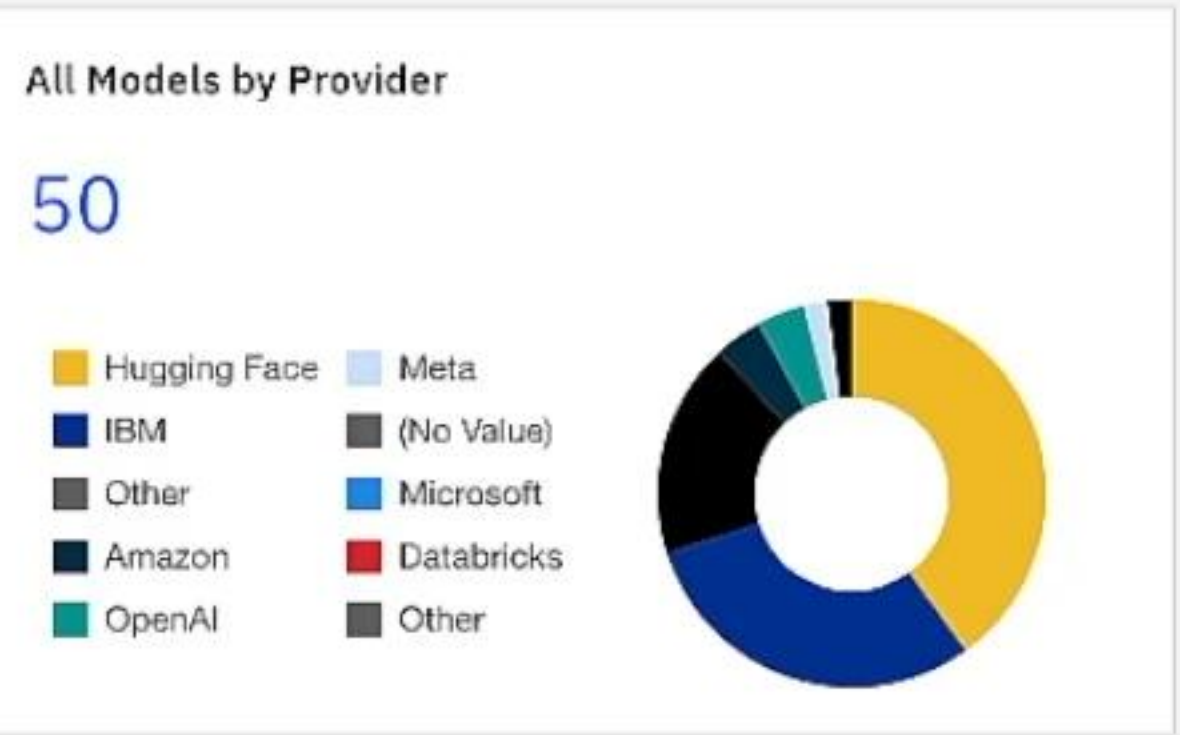
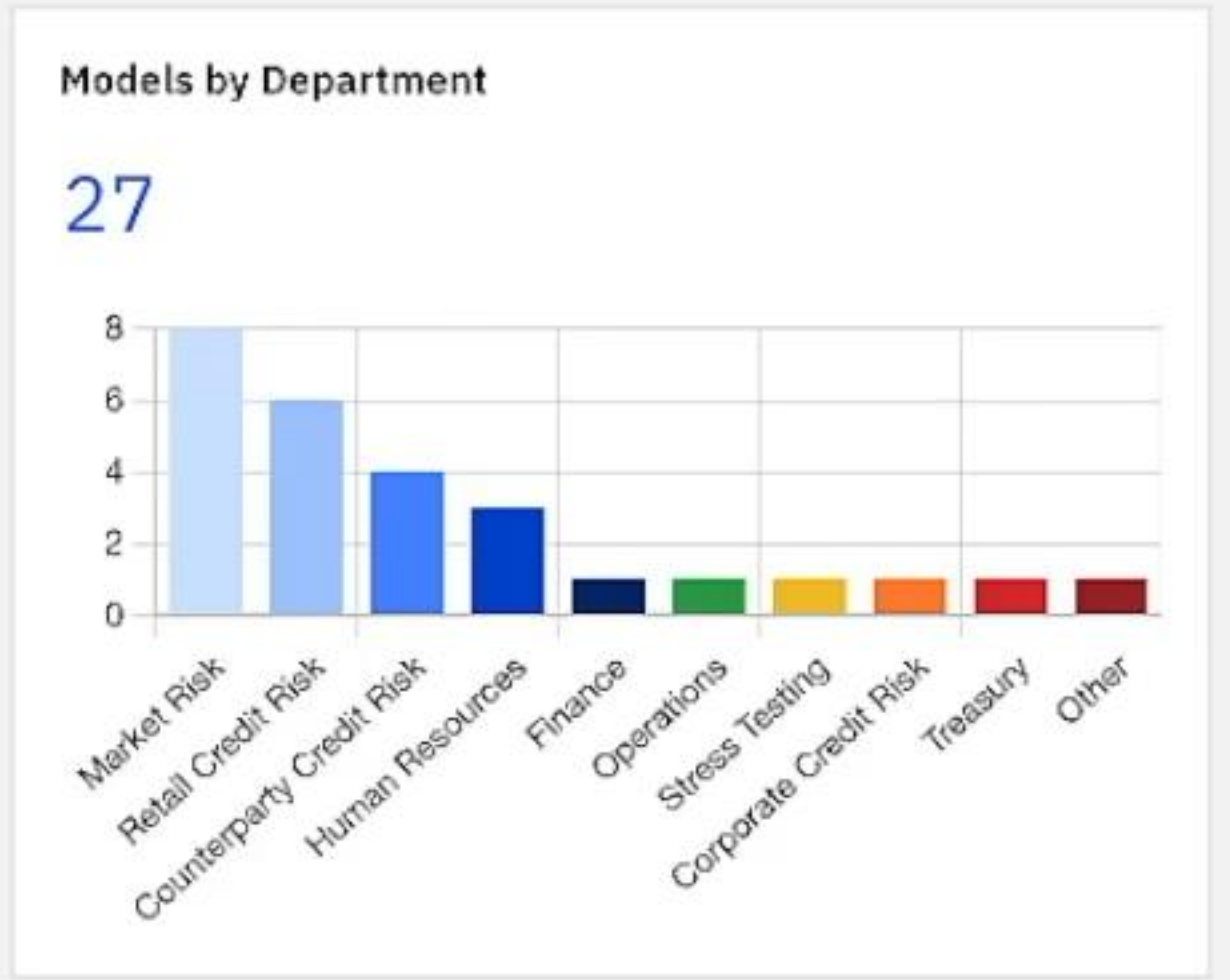
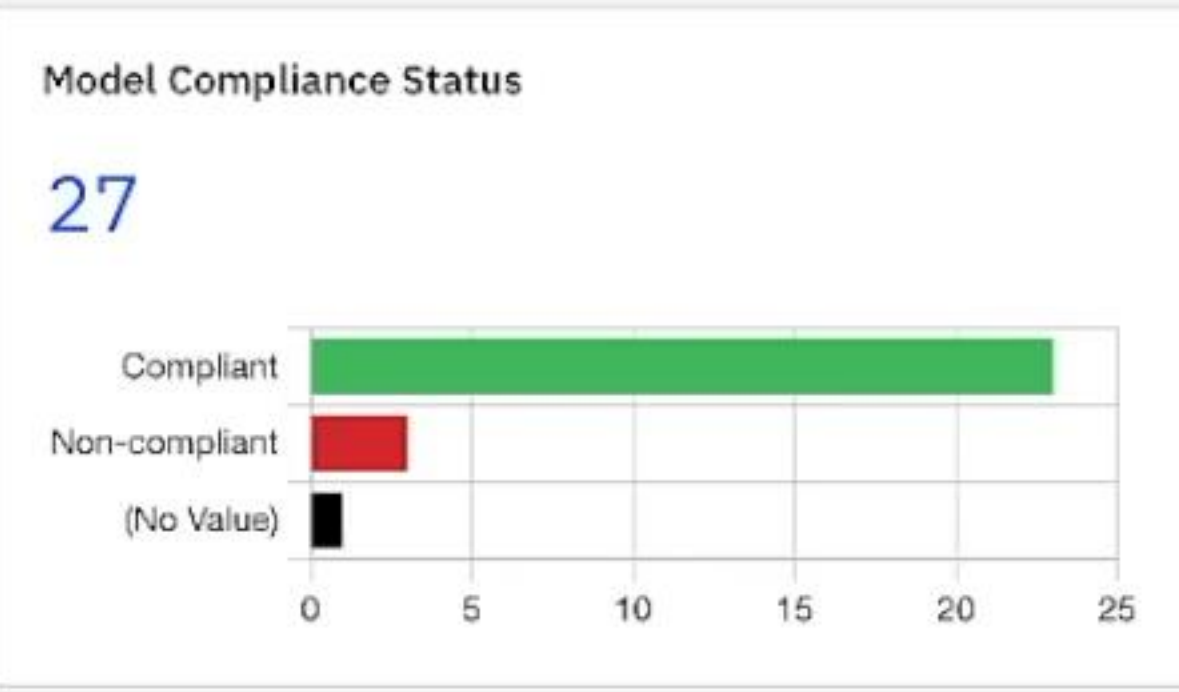


Jogszabályi megfelelés

EU és hazai MI szabályozások

- Mesterséges intelligenciára vonatkozó szabályozások lefordítása végrehajtható irányelvekké
- Auditálás és egyéb külső MI adatszolgáltatás
- Átlátható MI folyamatok kialakítása





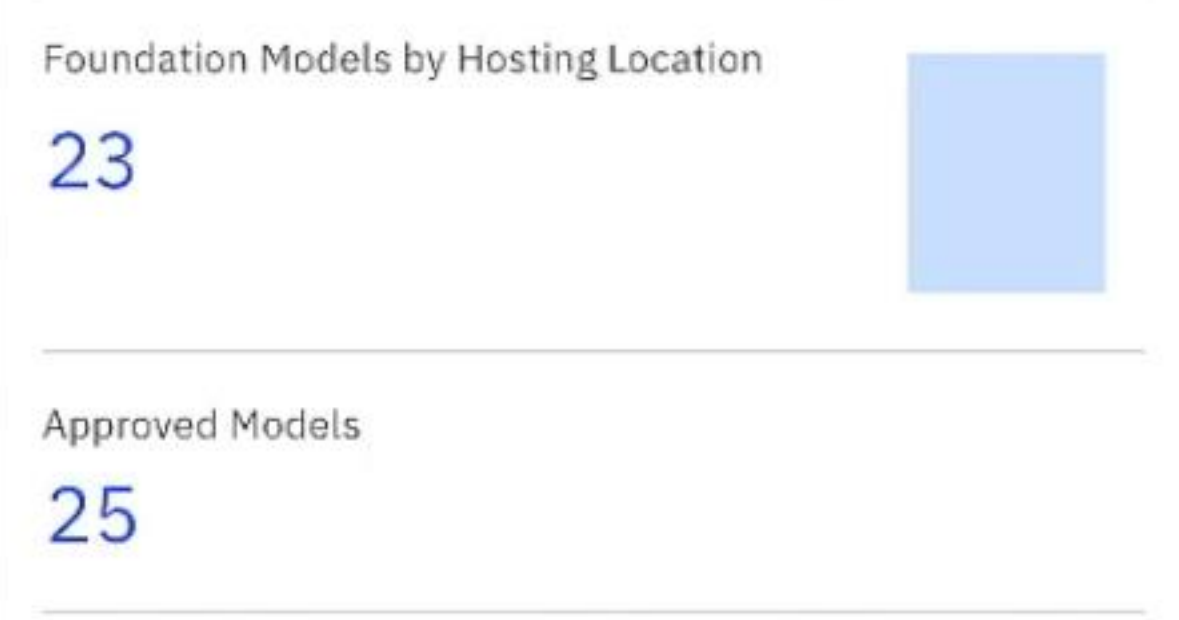
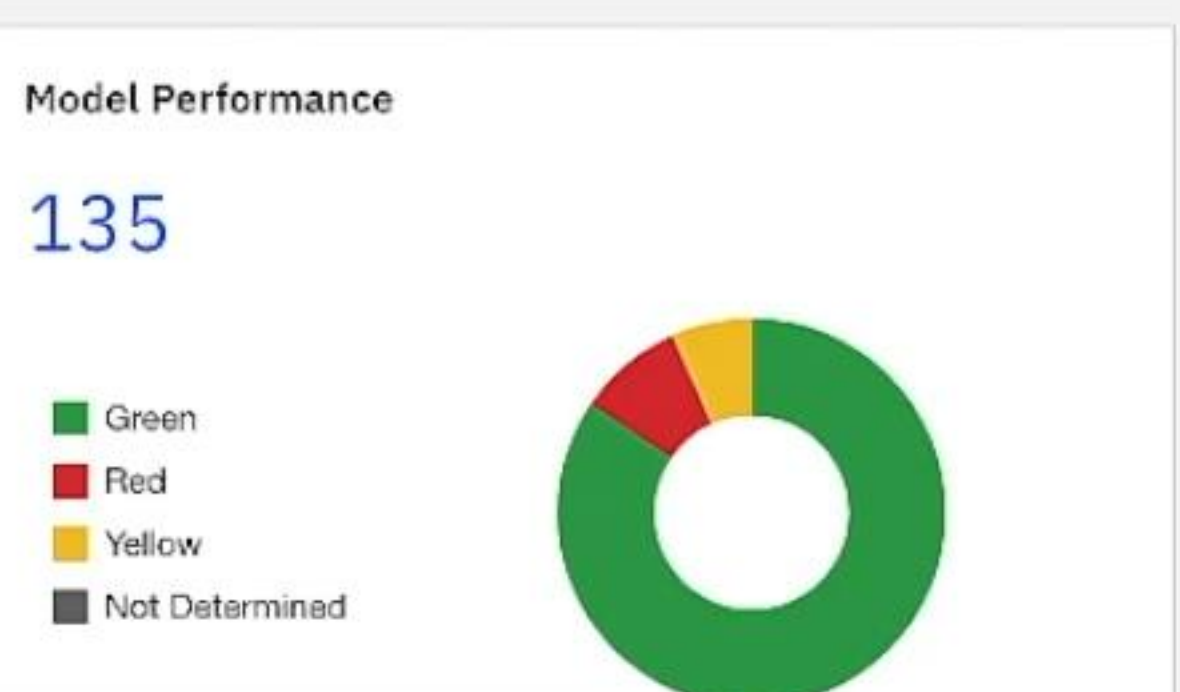
My Active Change Requests

0

Change Requests in Process

10

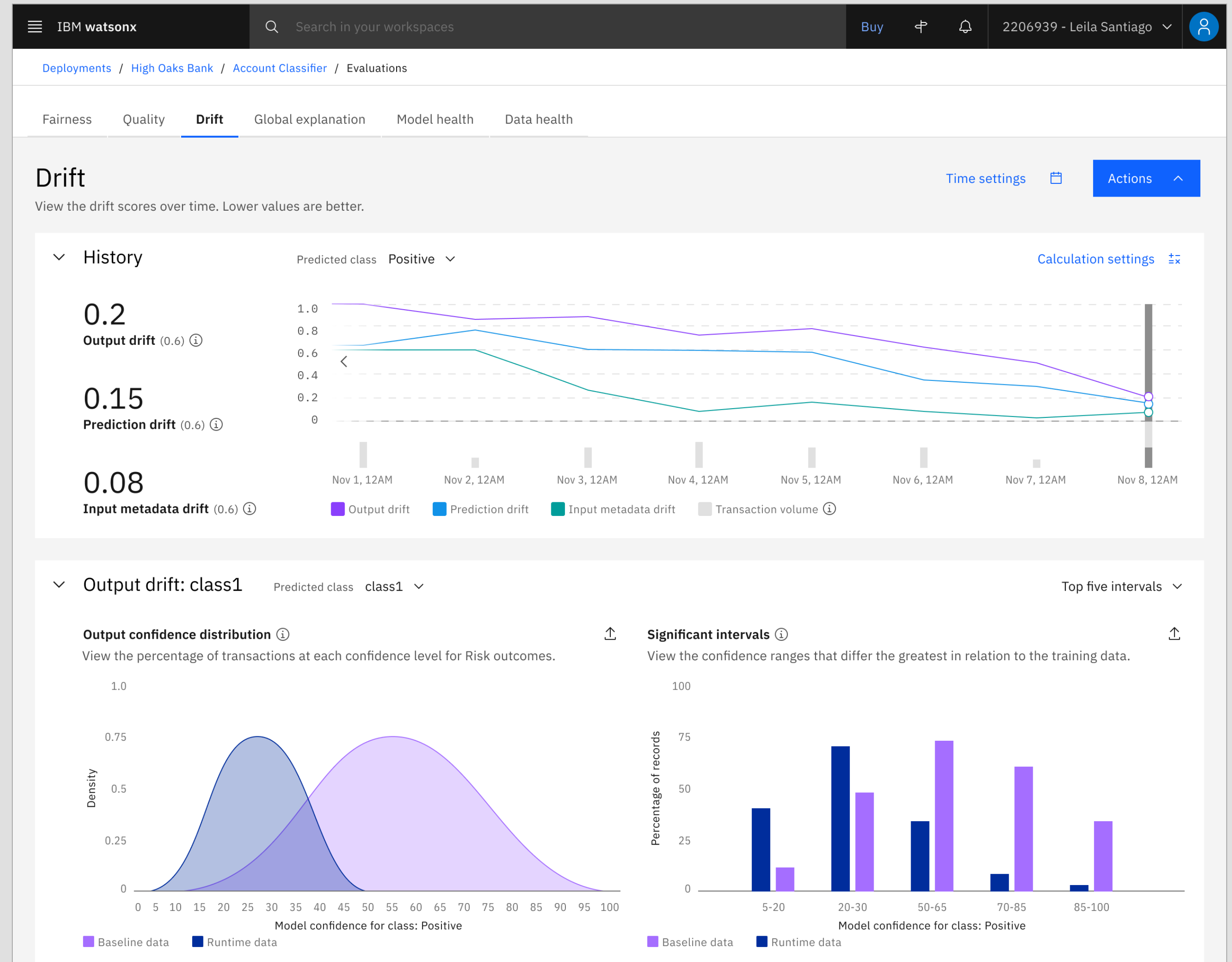
[New Change Request](#) +



Megbízható MI

A kockázat kezelése és a hírnév védelme

- Előre beállított riasztások az MI modellek automatikus felügyeletére
- Kockázatok kezelés és jogszabályi megfelelés biztosítása
- Magyarázható modelleredmények biztosítása a vizsgálatok támogatása és a bírságok elkerülése érdekében



Életciklus felügyelet

MI modellek magabiztos felhasználása

- Modellek nyomon követése a teljes MI életciklus során
- Modell metaadatok automatikus rögzítése a jogszabályi megfelelés érdekében
- Modellek teljesítményének felügyelete a teljes szervezeten belül, automatikus jelentéskészítés

The screenshot displays the IBM Watsonx Governance interface. The top navigation bar includes the IBM Watsonx logo, a search bar, and user information for Leila Santiago. The breadcrumb trail shows the path: Projects / OCCS Project / OCCS Model. A sidebar on the left lists various governance categories: Governance (selected), Foundation model, Prompt template, Prompt parameters, Evaluation (with sub-items: Develop, Test, Validate, Operate), Additional details, and Attachments. The main content area is titled 'Governance' and shows details for the 'OCCS Crew Communication System' model. Key information includes the AI use case name, an approved status with a unique ID, a description of the model's purpose, and associated tags like Q&A, Communication, and LLM. It also displays the approach 'Flan-UL2-12345' and the version '0.2.21'. At the bottom, a 'Lifecycle' section shows three stages: 01 Develop, 02 Validate (highlighted), and 03 Operate.

Model use case

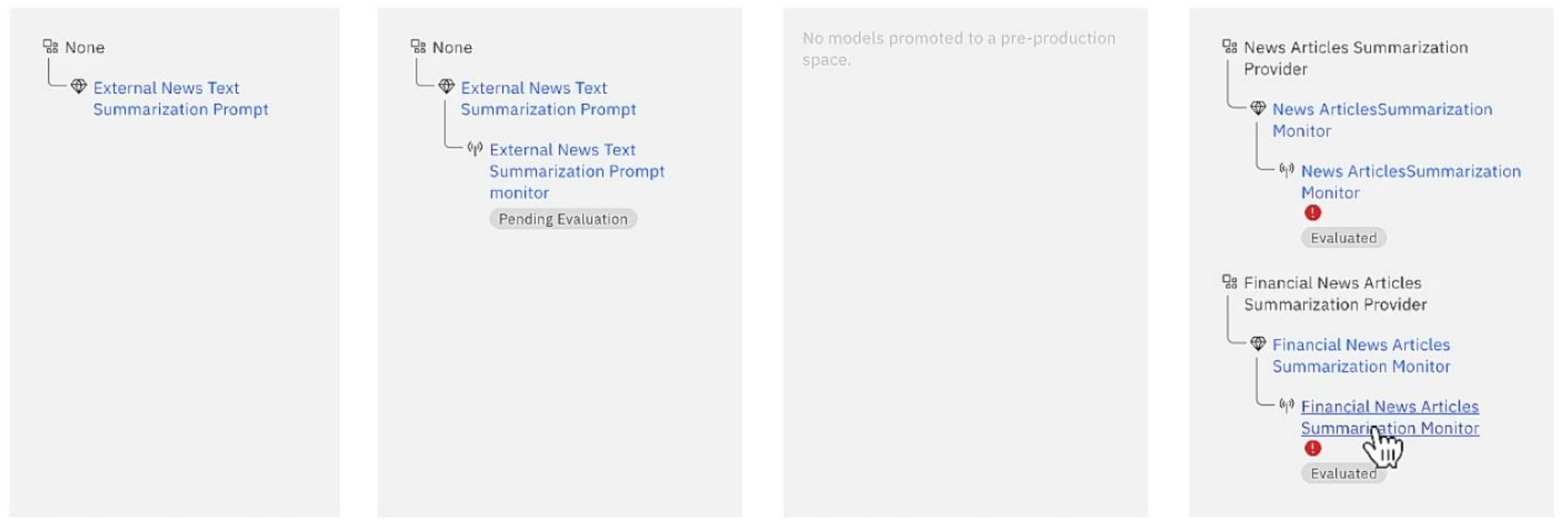
Text Summarization Use Case

Remove Add to project +

Overview Asset Access Review

Undeployed models in a project or external machine learning provider. Models deployed or ready to be deployed for testing. Models deployed or ready to be deployed for validation. Models deployed or ready to be deployed for operation.

v1.0.0



Default approach

About this asset

Description
Use case for prompt-based summarization

Asset owner
AA admin

Privacy
Public

Asset details
Size: -
Columns: -
Rows: -

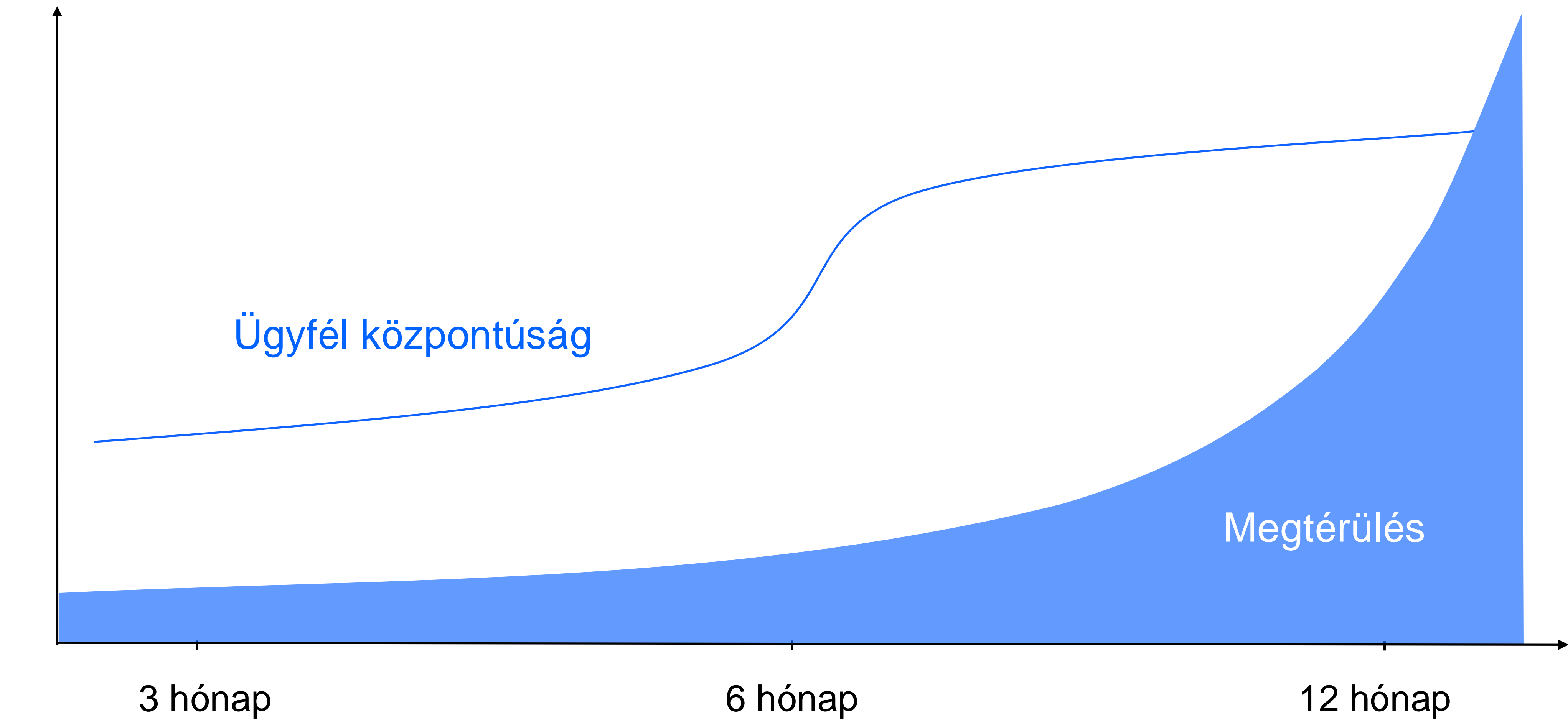
Source
Connection: -
Connector: -
Path: -

Resource key
Resource key not available.

Tags
No tags added yet.

Created by admin, Oct 13, 2023
Modified by System, Oct 30, 2023

Hogyan érdemes elindulni?



Egy üzleti esettanulmány
kiválasztása

Többi üzleti területre való
bevezetés

Más üzleti területekre való
kiterjesztés



IBM